

Youyang District Regional Plan and Bohai Town

Chongqing Development Corridor, China

Scale:

6,500 square kilometers

25.3 sq.km, of settlement areas

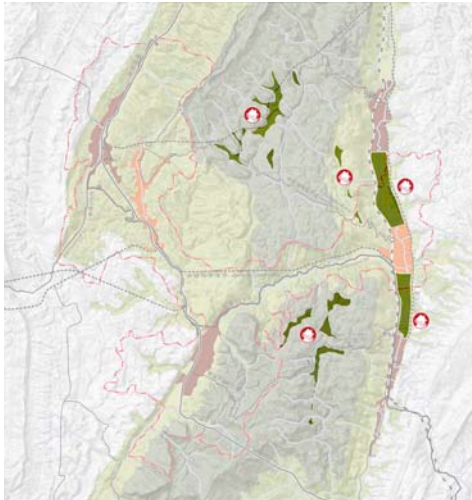
Client:

Yuanyang District Planning Department

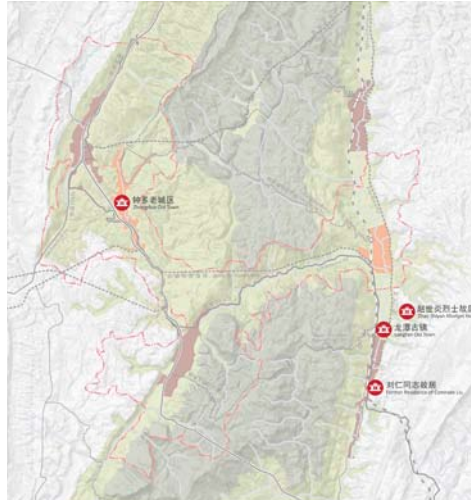
The jurisdictional boundary of the City of Chongqing includes two linear extensions that are part of the development corridors that link Chongqing to Shanghai and to Guangzhou via High Speed Rail. The Guangzhou corridor includes Youyang district.

The Regional Plan presents a strategy that balances needed economic growth in manufacturing with a sustainable ecological approach that preserves the spectacular mountains and valleys of the district, maintains its healthy agriculture, and expands tourism. In addition to these three sectors, smart-growth initiatives have also been developed for housing, mixed use, and transit. Other policy recommendations and strategies reflected in the Plan include: Achieving a jobs/housing balance; investing in local skill enhancement and knowledge; attracting business, residents and tourists alike; promoting a healthy lifestyle; and showcasing local heritage.

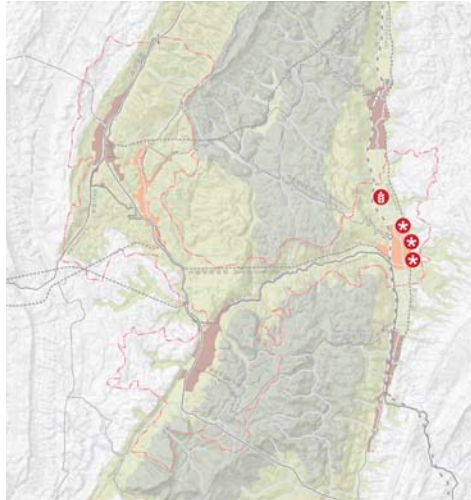
Extensive analysis of the hydrology and existing settlement locations modified and/or confirmed the location and extent of the six land areas set aside for development, and led to the selection of Bohai as the best location for a new regional center for the district. And as a matter of practical and symbolic importance, the mountains and valleys of the district have been unified for the first time by establishing an extensive network of roads, trails, pathways and navigable waterways to connect the all destinations.



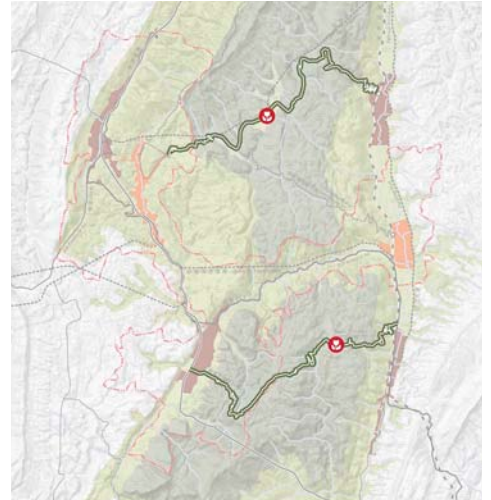
Preserved



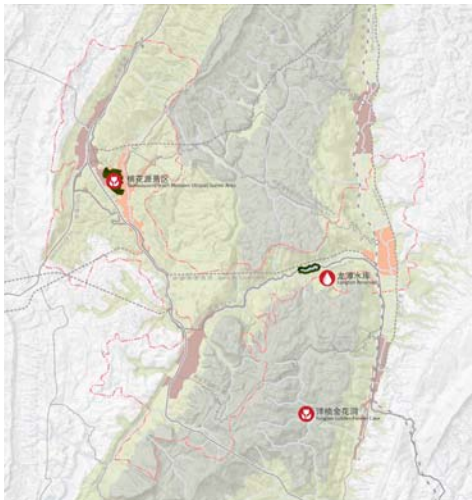
Historical



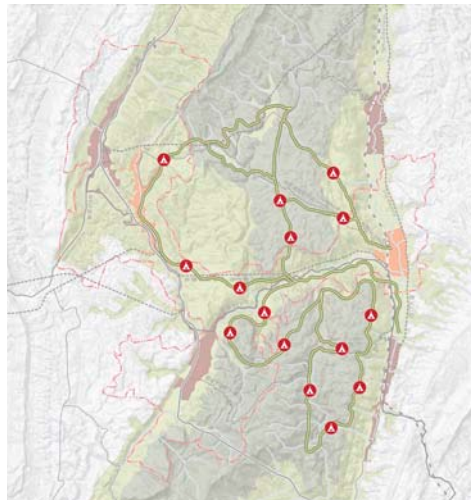
Resort



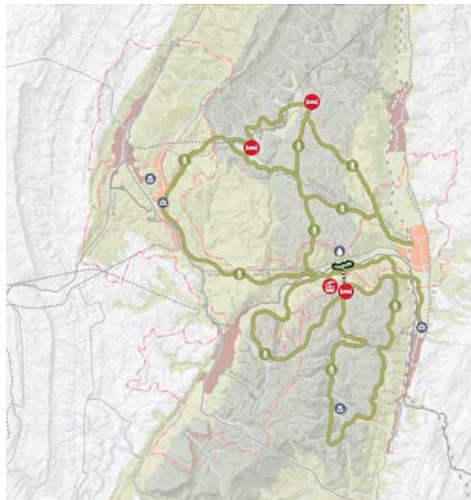
Scenic Drive



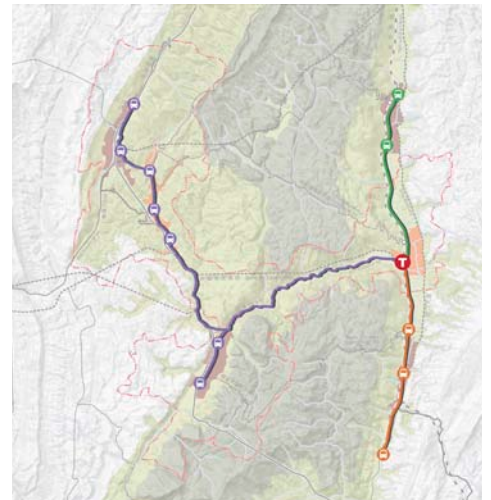
Scenic



Camping



Trails



Transit