



Suhr Oceanfront House

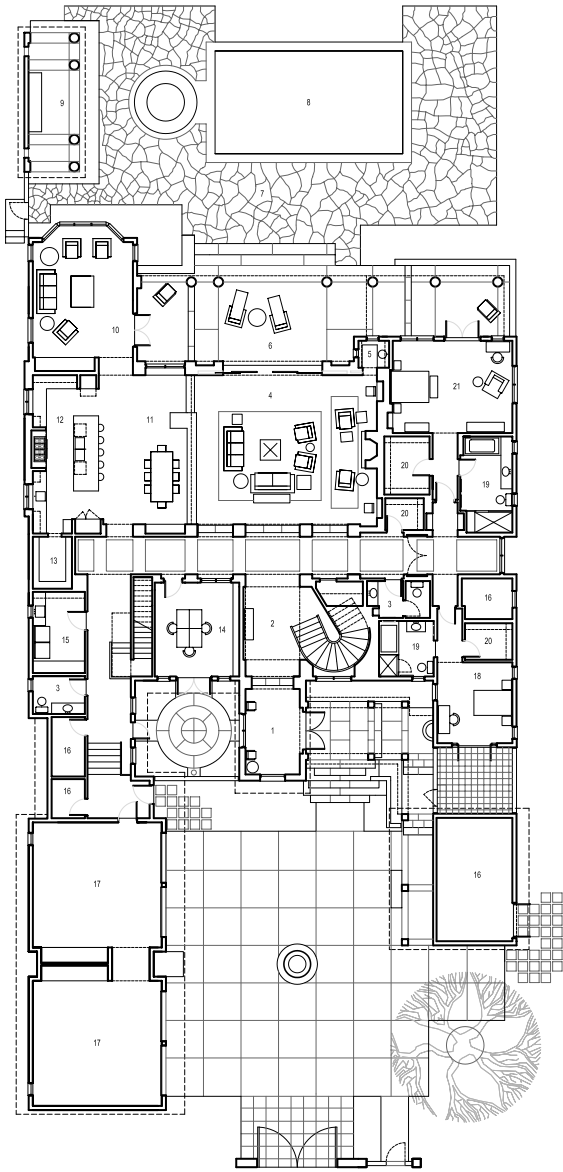
Guam, USA

Scale:
8000 SF

Client:
Brian Suhr

Design Team:
AES Inc., Guam

A gated formal drive-court with parking capacity for family and guests is the introduction to this large estate residence for a multi-generational family. A covered porch extends to the entry from where a large window looks back to the drive-court and another looks ahead to a garden court that serves a children's living room. Turning into the residence, the large combined living/dining room with open-plan kitchen looks out to the ocean and an infinity pool that enhances the relaxed tropical setting. A grandparent's suite and guest bedroom is at ground level, and the parent's and children's bedrooms form the two wings of a classical H-plan that is connected by a shared exercise area and protected family porch at the second level.



- LEGEND
- 1 ENTRY HALL
 - 2 STAR HALL
 - 3 POWDER
 - 4 LIVING
 - 5 BAR
 - 6 COVERED TERRACE
 - 7 POOL DECK
 - 8 POOL
 - 9 POOL PAVILION
 - 10 SITTING ROOM
 - 11 DINING
 - 12 KITCHEN
 - 13 PANTRY
 - 14 CHILDRENS
 - 15 LAUNDRY
 - 16 MECHANICAL
 - 17 GARAGE
 - 18 BEDROOM
 - 19 BATHROOM
 - 20 W.C.
 - 21 GRANDPARENTS

